

Spartan Nerf Step, JK 4 Door



Figure 1

Components

- | | | | |
|-----------------------------|-----|---------------------|-----|
| 1. Driver Side Nerf-step | (1) | 3. Mounting Bracket | (6) |
| 2. Passenger Side Nerf-step | (1) | | |

Hardware

- | | | | |
|----------------------|------|---------------------|------|
| 1. M10 Carriage Bolt | (12) | 6. M10 Washer | (6) |
| 2. M10 Flange Nut | (12) | 7. M10 Speed Clip | (6) |
| 3. M8 Hex Head Bolt | (6) | 8. M6 Hex Head Bolt | (12) |
| 4. M8 Washer | (6) | 9. M6 Washer | (24) |
| 5. M10 Hex Head Bolt | (6) | 10. M6 Nut | (12) |

OMIX-ADA® TECHNICAL SUPPORT

PHONE: M-F 8am - 5pm EST 1-800-449-6649

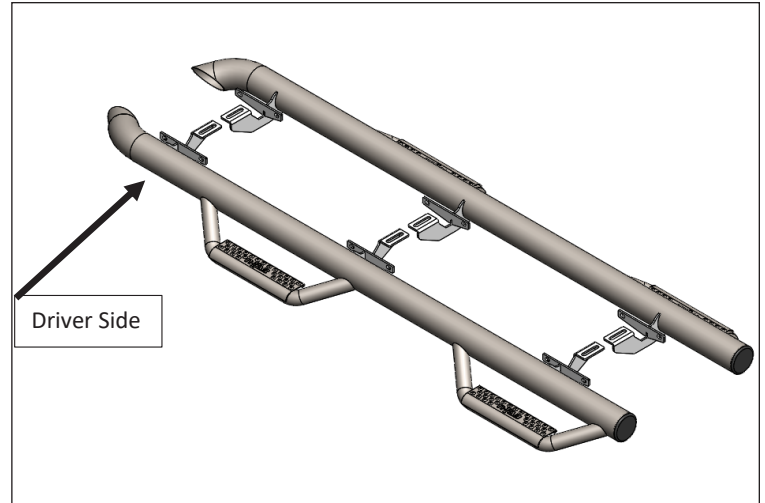
FOR WARRANTY OR TECH CONCERNS EMAIL: webmaster@omixsupport.com

ATTN: STATE OF CALIFORNIA CONSUMERS

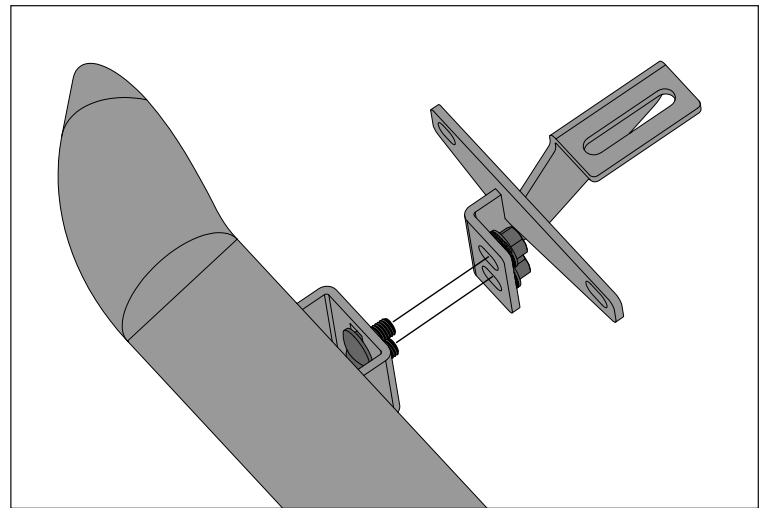
⚠ WARNING: Cancer and Reproductive Harm - www.P65Warnings.ca.gov.

Spartan Nerf Step, JK 4 Door

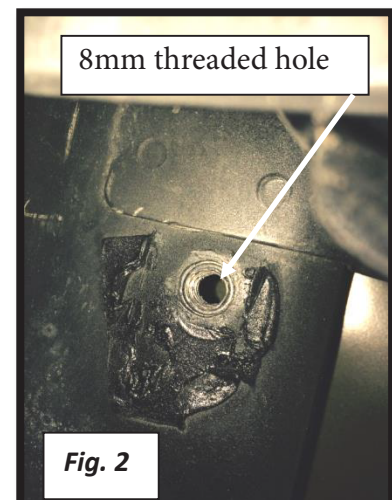
1. Identify driver and passenger side Nerf-step. **NOTE:** The bend will be toward the front of the vehicle. Straight-cut end will face the rear of your Jeep.



2. Using M10 Carriage Bolt and M10 Flanged Nut, loosely attached mounting brackets to Nerf-step.



3. Depending on your year model, there will be either existing 8mm threaded holes for the M8 Hex Head Bolts or open slots for the M10 Speed Clips.

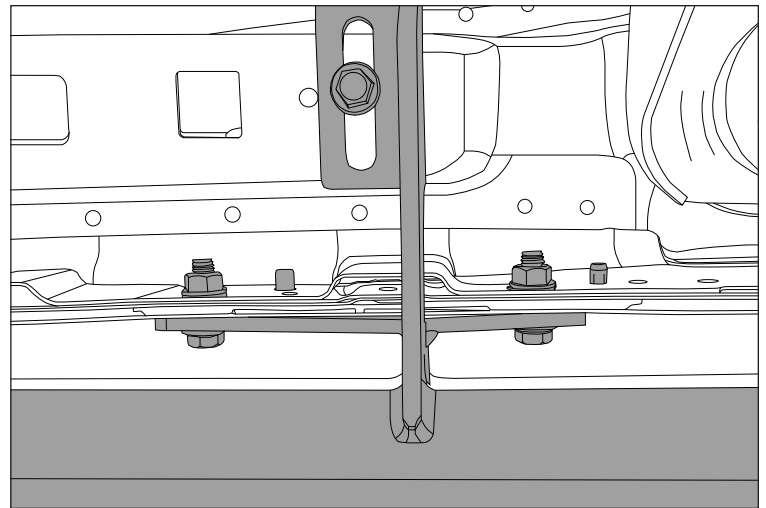


Spartan Nerf Step, JK 4 Door

4. If your model requires the M10 speed clips, install M10 Speed Clip.



5. Starting with the passenger side, carefully raise the mounting Bracket up to the pinch weld of the body and align the pinch weld tabs with the 6mm mounting holes. Loosely install the (6) M6 Hex Head Bolts, Washers, and Nuts.



6. Attach Mounting Bracket to underbody mounts with supplied M8 Hex Head Bolts through the pre-threaded factory holes, or use M10 Hex Head Bolts through the M10 Speed Clips.

7. Once the Nerf-step is properly aligned, tighten all hardware.

8. Repeat Steps 1-7 for Driver side.



Figure 1