

JEEP JL/JT ELITE HALF DOORS (REAR)

2018+ JEEP JL
2020+ JEEP JT
HDJL-02R



TOOLS REQUIRED

- 5mm Allen Bit
- T40, T50 Torx Bit
- 8mm, 13mm Socket
- 13mm Wrench
- Ratchet

SKILL LEVEL

- Novice/Intermediate
 - 1 (you) to 2 persons
- Little skill level required, you can easily install it by yourself however, additional help will be useful

TIME REQUIRED

- 1.5 Hours
- Time to install this should only take about an hour and a half

WARNINGS/CAUTIONS BEFORE STARTING INSTALLATION

Before you install this kit – Read and understand all instructions, warnings, cautions, and notes contained in this installation instruction guide. Consult your vehicle owner’s manual for proper disconnection of electrical and lifting of vehicle if required for installation of this product.

This install may require some technical skills and knowledge of basic mechanical work. If you do not feel that you are capable of performing this install please take this product to a trained professional.

After reading this guide please contact us with any questions or concerns before installing product.
Customer Service: 855-680-9595

DV8 Offroad is not responsible for any bodily injury or harm to you or your vehicle as a result of an improper install.

Proper installation of this kit required knowledge of the factory recommended procedures for removal and installation of original equipment components. We recommend that the factory shop manual and any special tools needed to service your vehicle be on hand during the installation. Installation of this kit without proper knowledge of the factory recommended procedures may affect the performance of these components and the safety of the vehicle

- Always wear eye protection when operating power tools

Inspect all contents of this package to make sure product is not damaged and all installation hardware has been included. If parts are missing from kit, please be prepared to provide the following information

1. Name of purchase location
2. Bar Code on side of box
3. Date above bar code
4. Date inside box cover



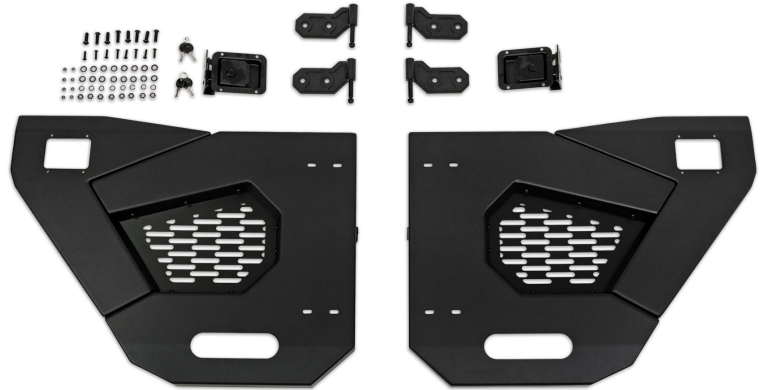
INSTALLATION MANUAL

STEP 1

Begin by unpacking all items and inspecting for missing pieces or damage. If you have any concerns, please contact the company the product was purchased from.

HARDWARE INCLUDED

- (8) M8x25 Allen Bolts
- (16) M8 Flat Washers
- (8) M8 Split Washers
- (8) M8 Nuts
- (8) M5x2016 Allen Head Bolts
- (8) M5 Nuts



STEP 2

Install the door latches using the provided M5 hardware with 8mm socket and 3mm allen bit. Take note of the orientation of the latches, as they are side specific.

Note: Spacer will go between inside of door and latch.



STEP 3

Loosely install hinges on the doors using the provided M8 hardware with a 13mm socket and 5mm allen bit. The threads will be facing towards the bottom of the door.



INSTALLATION MANUAL



STEP 4

Remove the nuts off the half doors using a 13mm socket and save for installation of the doors on the vehicle in later steps.



STEP 5

Moving to the vehicle, begin removing the door by disconnecting the wire connector located behind the trim panel where the door straps lead.

Remove the trim panel by pulling towards the rear of the vehicle until it unclips. Remove the wire connector by pressing the release clip and pulling down.

Note: Roll down your windows prior to disconnecting the wiring. This will make lifting the doors off easier and protect the glass from damage.



INSTALLATION MANUAL

STEP 6

Now that the wiring harness has been disconnected, lift up on the door strap to remove it from the hook.

Using a T40 torx bit, remove the door check.

Take caution not to damage the vehicle as the doors may swing towards the front fender.



STEP 7

Use a T50 torx bit to remove the bolts securing the doors to the vehicle. With the assistance of another person, lift the door carefully off the vehicle and set off to the side, being careful not to damage the door or vehicle.



INSTALLATION MANUAL

STEP 8

Lift the DV8 half door and carefully align the studs into the door mounts, and loosely secure the nuts to the bottom the studs with a 13mm socket.



STEP 9

Open the latch on the door to the open position and slowly close the doors to the latch mechanism on the Jeep to check fitment.

If your door cannot latch, adjust the bumpstop by threading it into the door, until the latch can close properly. Once closed, check that the bumpstop is contacting the vehicle to prevent rattling. In some cases, it may be necessary to remove the nut to be able to get the door to latch with proper fitment.

At this time, you can also determine if the spacer plate for the latching mechanism, needs to be removed.





STEP 10

With the door closed, lift up slightly on the front section of the door to apply pre-load and secure the hinges using a 5mm allen head and 13mm wrench.



STEP 11

Attach the door strap to the hook to prevent it from swinging completely open.



INSTALLATION MANUAL

STEP 12

Install trim piece by pushing towards the front of the vehicle until it clips into place.



STEP 13

Secure the M8 Nuts on the hinges using a 13mm wrench.



STEP 14

Double check fitment and all hardware is secure. Congratulations, you are now finished with the install of the JT/JL Half Doors!

