

ROUGH COUNTRY

SUSPENSION SYSTEMS®

JEEP 07-18 JK, 18-UP JL & 2020-UP JT Front Bumper

Thank you for choosing Rough Country for all your vehicle needs.

Please read instructions before beginning installation. Check the kit hardware against the kit contents shown below. Be sure you have all needed parts and know where they go.

If question exist, please call us @1-800-222-7023. We will be happy to answer any questions concerning this product.

Check all fasteners for proper torque. Check to ensure for adequate clearance between all components.

Periodically check all hardware for tightness.

KIT CONTENTS:

20" Single Row LED Light Kit x1
 2" LED Light Kit x1
 Bumper x1
 Skid Plate x1
 JL Driver Side Skid Plate Bracket x1
 JL Pass Side Skid Plate Bracket x1
 D-Ring x2
 JK Driver Side Skid Plate Bracket x1
 JK Pass Side Skid Plate Bracket x1

TOOLS NEEDED:

8mm Socket
 10mm Socket
 15mm Wrench or Socket
 16mm Wrench or Socket
 18mm Wrench or Socket
 19mm Wrench or Socket
 Flat Head Screwdriver

HARDWARE INCLUDED:

12mm Spacer x2
 12mm Flag Bolts x4
 12mm Nylock Nuts x8
 12mm Flat Washers x8
 8mm x 16mm Bolts x2
 8mm x 20mm Bolts x2
 8mm x 30mm Button head Bolt x4
 8mm Flat Washers x14
 8mm Lock Washers x10
 8mm Hex Nuts x6
 8mm x 35mm T-Bolts x2
 8mm x 25mm T-Bolts x2
 Clear Retaining Clips x2
 Clear Retaining Clips x8



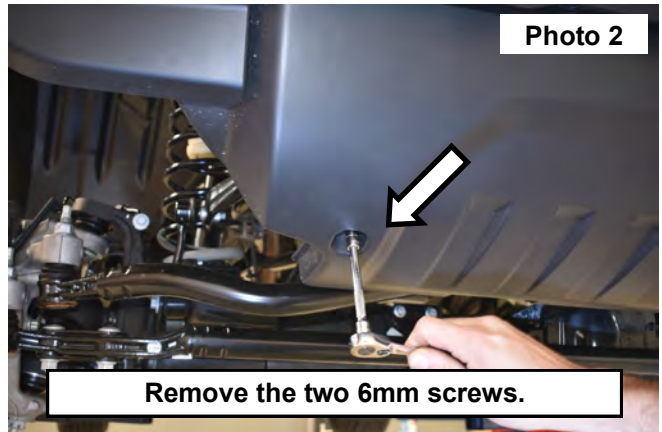
Torque Specs:

Size	Grade 5	Grade 8	Size	Class 8.8	Class 10.9
5/16"	15 ft/lbs	20ft/lbs	6MM	5ft/lbs	9ft/lbs
3/8"	30 ft/lbs	35ft/lbs	8MM	18ft/lbs	23ft/lbs
7/16"	45 ft/lbs	60ft/lbs	10MM	32ft/lbs	45ft/lbs
1/2"	65 ft/lbs	90ft/lbs	12MM	55ft/lbs	75ft/lbs
9/16"	95 ft/lbs	130ft/lbs	14MM	85ft/lbs	120ft/lbs
5/8"	135ft/lbs	175ft/lbs	16MM	130ft/lbs	165ft/lbs
3/4"	185ft/lbs	280ft/lbs	18MM	170ft/lbs	240ft/lbs

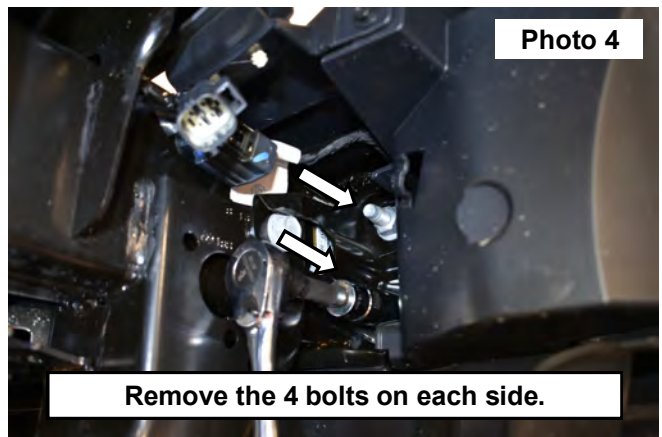
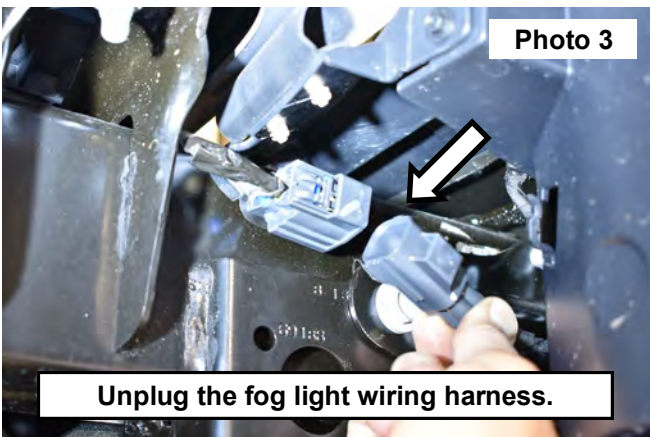


INSTALLATION INSTRUCTONS

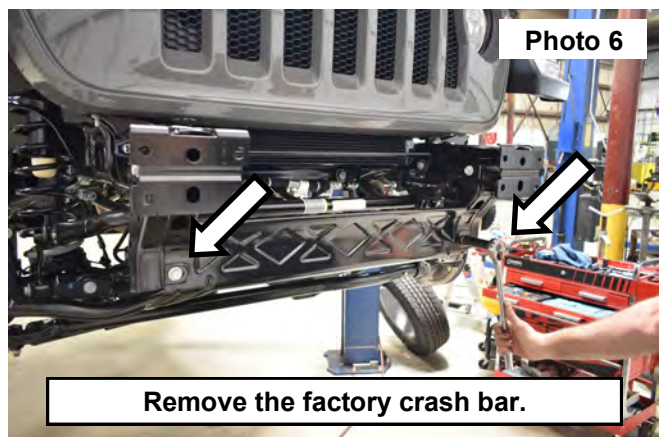
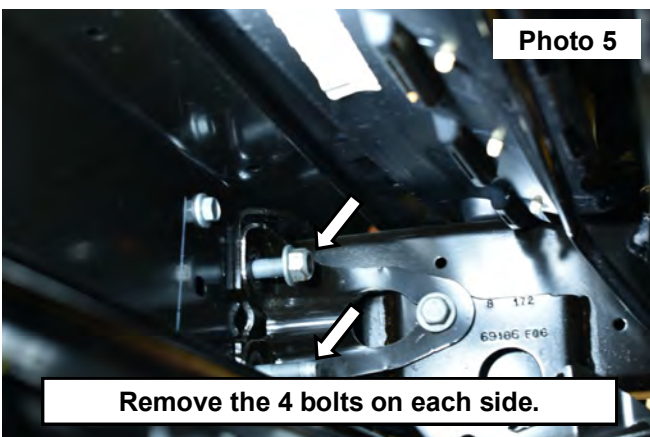
1. Place vehicle on a flat surface and set emergency brake.
2. Remove the 2 plastic pins on the top of the front bumper cover between the bumper and grill and the clips holding the trim piece to the bumper. **See Photo 1.**
3. Remove the two 6mm screws from the factory lower skid plate. **See Photo 2.**



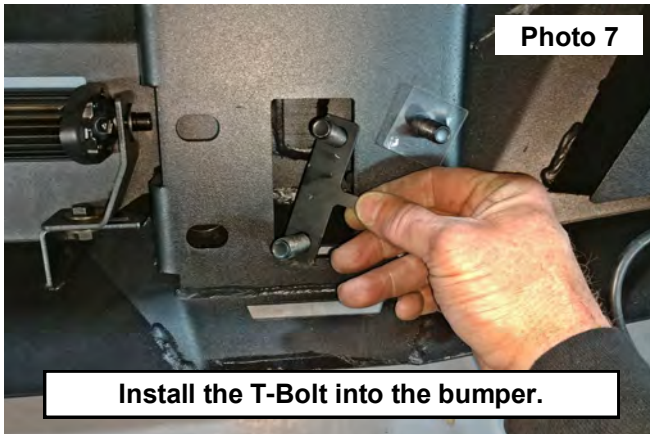
4. Unplug the fog light wiring harness on the passenger side as shown in **Photo 3.**
5. Support the bumper. Then remove the 4 bolts on each side using a 18mm socket and remove the bumper from the vehicle. **See Photo 4 & 5.**
6. Remove the factory crash bar using a 16mm socket. **See Photo 6.**



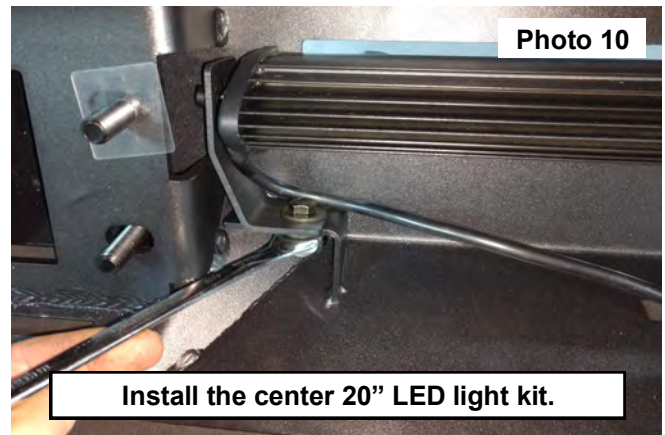
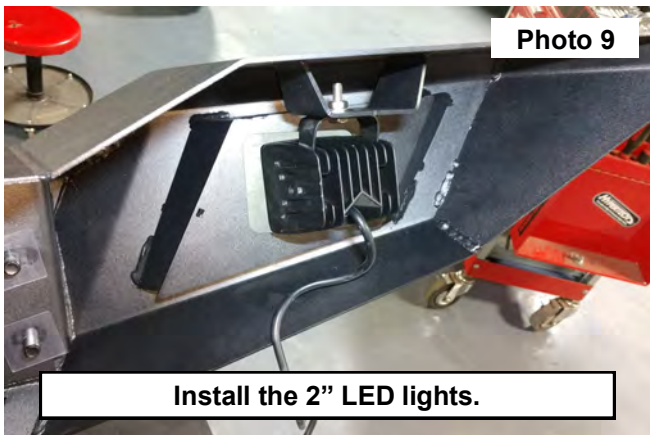
7. Locate the (4) T-Bolts and install into the bumper. **See Photo 7.**
8. Secure the T-Bolts into the bumper using (2) of the supplied clear square retainers on each T-Bolt. **See Photo 8.**



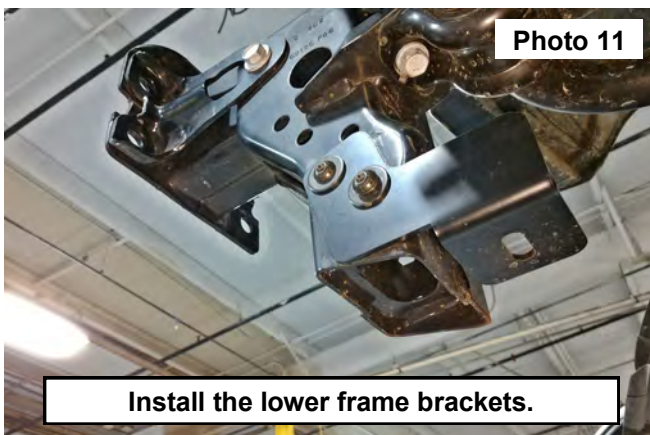
9. Install the 2" LED lights onto the out side mounts of the bumper using the supplied hardware in the light kit. **See Photo 9.**



10. Install the center light mount bracket onto the bumper using the supplied 6mm Hex head bolts, washers and hex nuts included with the light kit. Then install the mounted 20" LED light into the bumper using the supplied hardware in the light kit. **See Photo 10.**
11. Install the lower frame brackets using (2) 8mm x 30mm Button head bolts (4) 8mm Flat washers (2) 8mm Lock Washers and (2) 8mm Hex Nuts. Tighten hardware using a 4mm allen wrench and a 13mm wrench. **See Photo 11.**

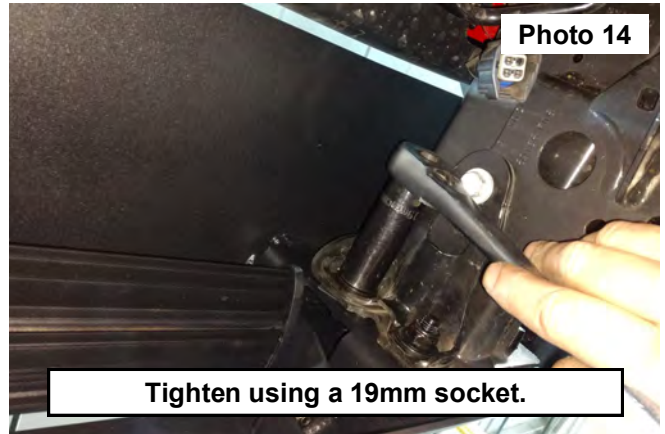


12. Support and install the bumper onto the vehicle. **See Photo 12.**
13. Secure the bumper using (2) of the supplied 12mm Nylock nuts and (2) on each side of the inside frame brackets. Tighten using a 19mm socket. **See Photos 13 and 14.**

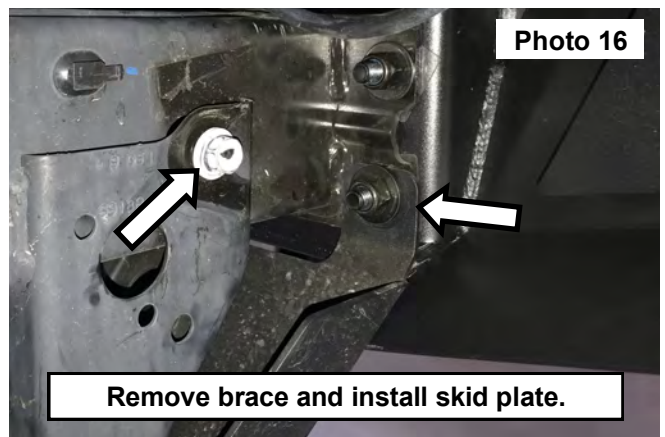


14. Install the skid plate. **See Photo 15.**

15. Place the skid plate onto the lower T-Bolt stud on the outer side mount. **See Photo 16.**

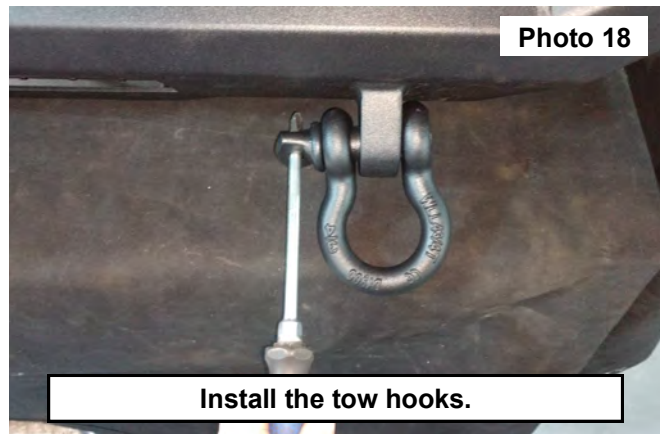
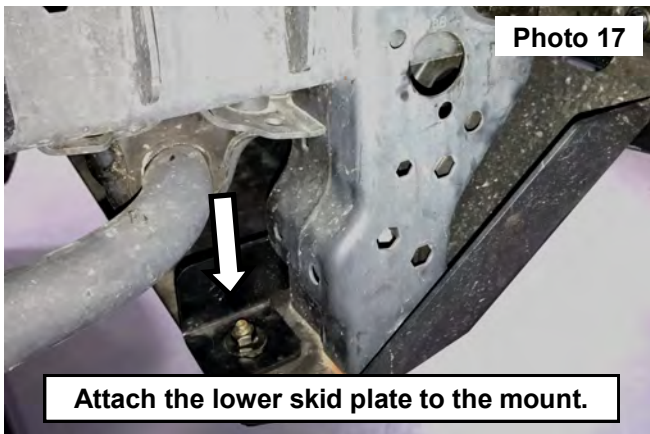


16. Remove the outer brace to allow the skid plate to be installed using a 16mm socket. Connect the lower skid plate to the lower frame mount using (1) 8mm button head bolt (2) 8mm washers and (1) 8mm nut. **See Photo 17.**



17. Install the D-rings onto the front bumper mounts. **See Photo 18.**

18. Connect the 2" and the 20" LED light kit wiring harness to the lights. Then connect the harness to the battery.



By purchasing any item sold by Rough Country, LLC, the buyer expressly warrants that he/she is in compliance with all applicable, State, and Local laws and regulations regarding the purchase, ownership, and use of the item. It shall be the buyers responsibility to comply with all Federal, State and Local laws governing the sales of any items listed, illustrated or sold. The buyer expressly agrees to indemnify and hold harmless Rough Country, LLC for all claims resulting directly or indirectly from the purchase, ownership, or use of the items.

